

Customer :

customer

Customer part :

customer part

Comment :

Comment

S1=0.05

S2=0.3

Tmax=463

Tp S2=502.0

PI=0.14

HI=44

Sample =8742.7

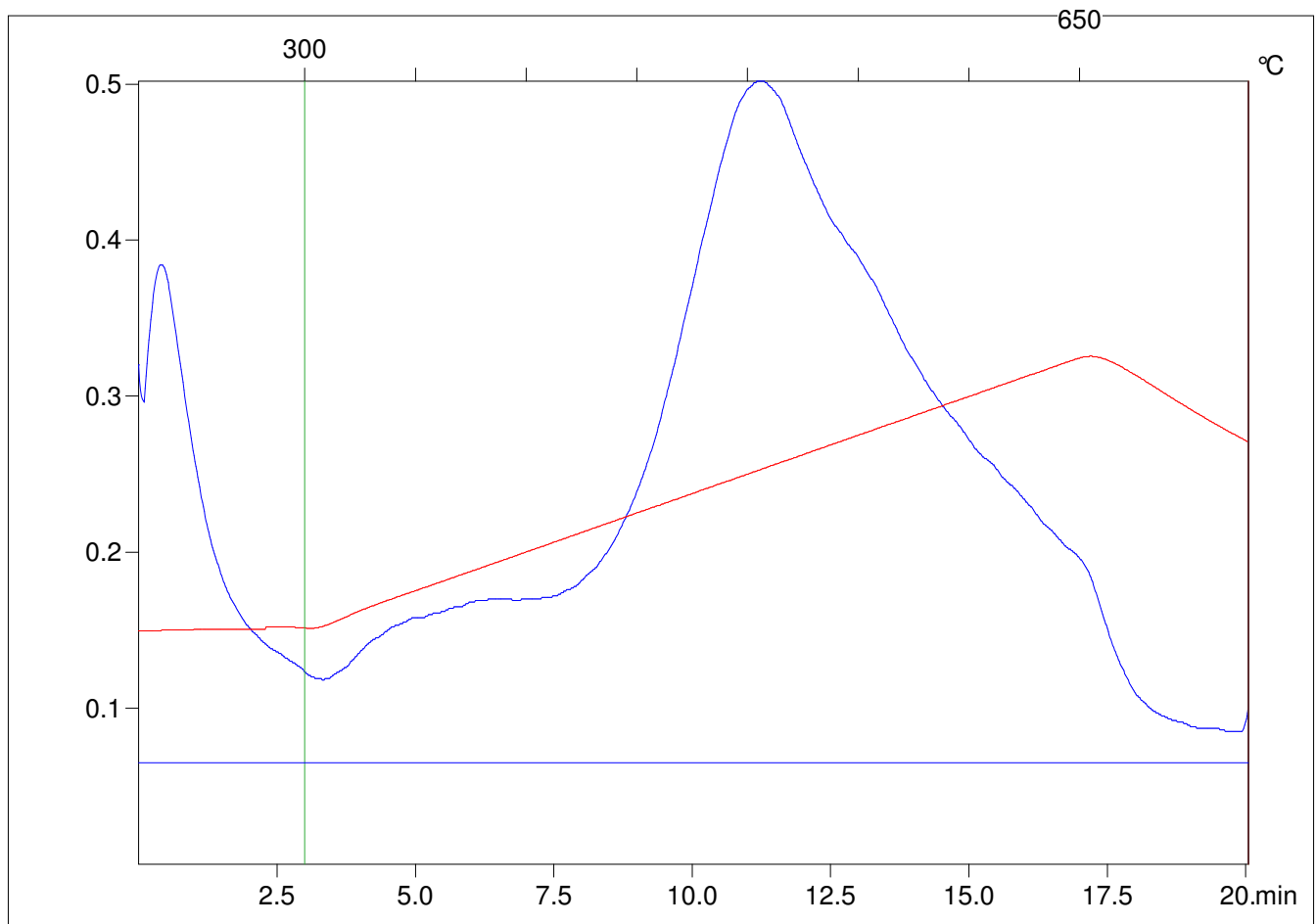
Method =Bulk Rock

Cycle=Basic

KFID(10*9)=1167

Qty =70.4

TOC=0.68



C:\VINC\PK141015\PK095.R00 : FID pyrolysis graphic

State

Pyro Status

Oxi Status